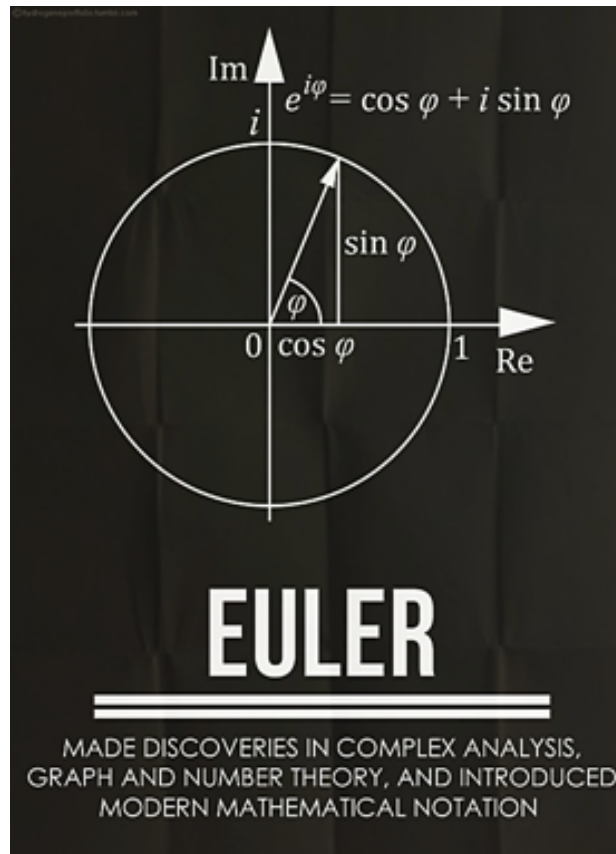


Helping students achieve

The Able Enrichment Centre was founded in 1995 and has been helping students succeed in mathematics for over twenty years.

From basic arithmetic to advanced calculus, the Able Enrichment Centre is built upon the practice and reinforcement of core concepts to build a strong foundation in math.



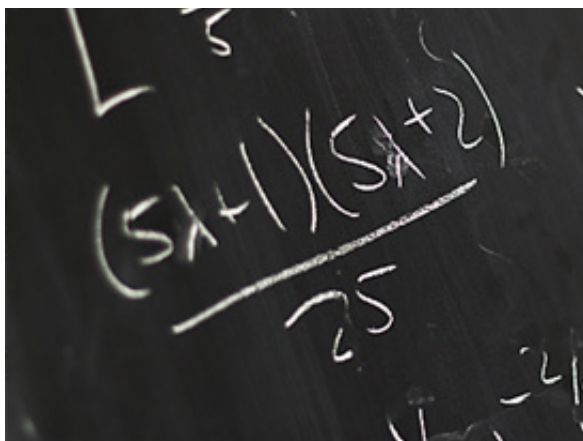
The year-long program is geared towards students from grades 6 through 12, and covers core topics from basic arithmetic up to calculus.

The summer program allows younger and older students to practice and sharpen their math skills and scientific application over the summer as well as learn new concepts before the next school year.

Able Enrichment Centre



Summer Program 2018



Summer 2018 Sessions

This summer, the program will be held on Saturdays in July and August as follows:

July 7
July 14
July 21
July 28
August 4
August 11
August 18
August 25

Each day will be two hours long from 2:00-4:15 pm, which is a great way for students to be introduced into the year-long program in the Fall.

Similar to the year-long program, each session is held on Saturday afternoons at St. John's-Ravenscourt School.

Program Curriculum

The main focuses of the summer program include:

- 1) Lecture
- 2) Real World Applications/Group Activities and Games

Topics will include:

Basic Operations

- o Addition/Subtraction of integers
Long addition/subtraction
- o Multiplication/Division integers
Long multiplication/division
- o BEDMAS
- o Prime numbers
- o Improper Fractions vs. Mixed Fractions
- o $\div/\times/-/+$ Word problems
- o Percentage/fraction/decimal conversions
- o Rates and ratios
- o Probability
- o Simple Algebra
- o Fundamental basics of Chemistry and Physics + Supervised experiments



Program Costs and Recommendations

Two month program - \$200/student

The summer program is aimed primarily at younger students entering their last years of elementary and their first years of middle school.

It is also recommended for students seeking stronger foundation in basic arithmetic, as well as the "how" and "why" of mathematics. Or for those who wish to maintain their math practice over the summer.

Students enrolled in the summer program are not obligated to enroll in the year-long program, but if further learning and practice is helpful it is highly recommended to continue through the program in the Fall.

Contact Us

ABLE Enrichment Centre
400 South Drive
Winnipeg, Manitoba R3T 3K5
E-mail us:
ablemath@gmail.com
Visit us on the Web:
www.ablemath.ca